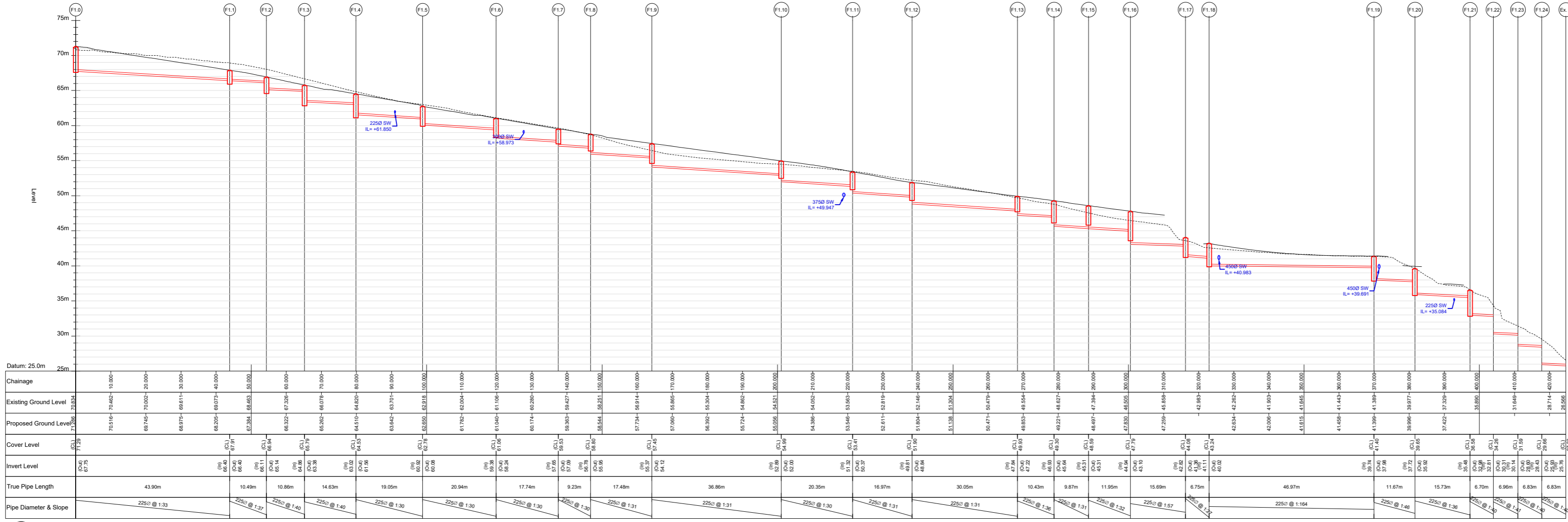
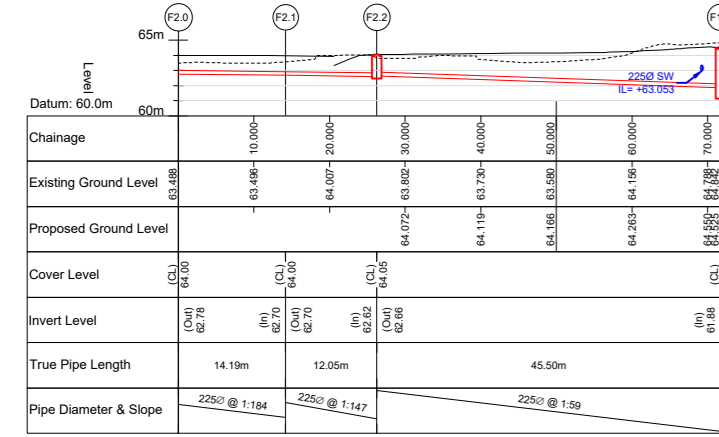


NOTES

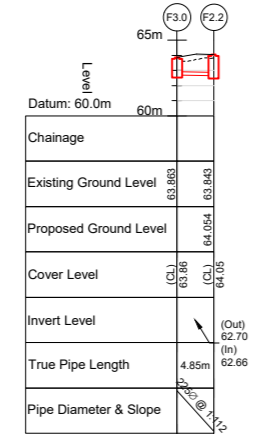
- THIS DRAWING IS TO BE READ IN CONJUNCTION WITH ALL ENGINEERS & ARCHITECTS DRAWINGS FIGURED DIMENSIONS ONLY (NOT SCALING) TO BE USED. WHERE A CONFLICT OF INFORMATION EXISTS OR IN ANY DOUBT - ASK.
- CONSULTANTS TO BE INFORMED IMMEDIATELY OF ANY DISCREPANCIES BEFORE WORK PROCEEDS.



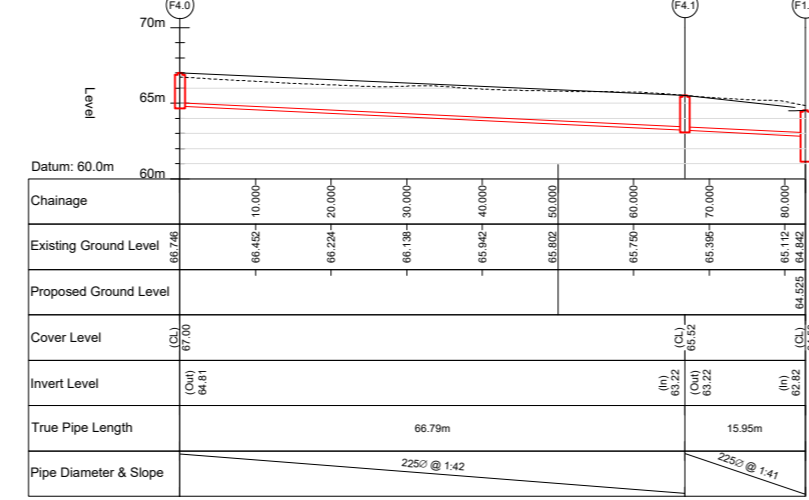
F1 SECTION
SCALE @ A0: H=1:500, V=1:250
SCALE @ A2: H=1:1000, V=1:500



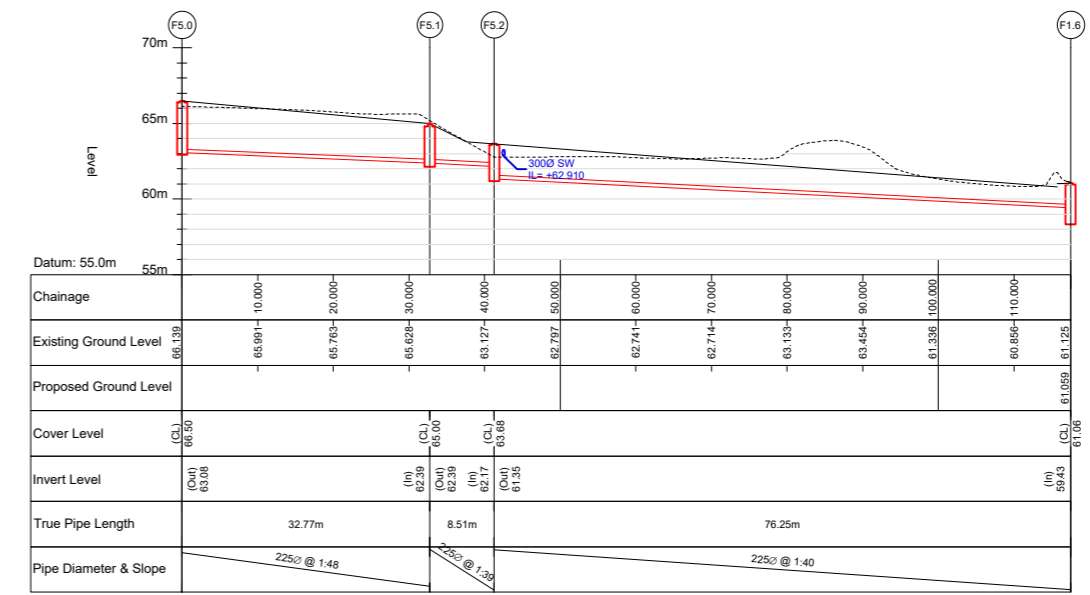
F2 SECTION
SCALE @ A0: H=1:500, V=1:250
SCALE @ A2: H=1:1000, V=1:500



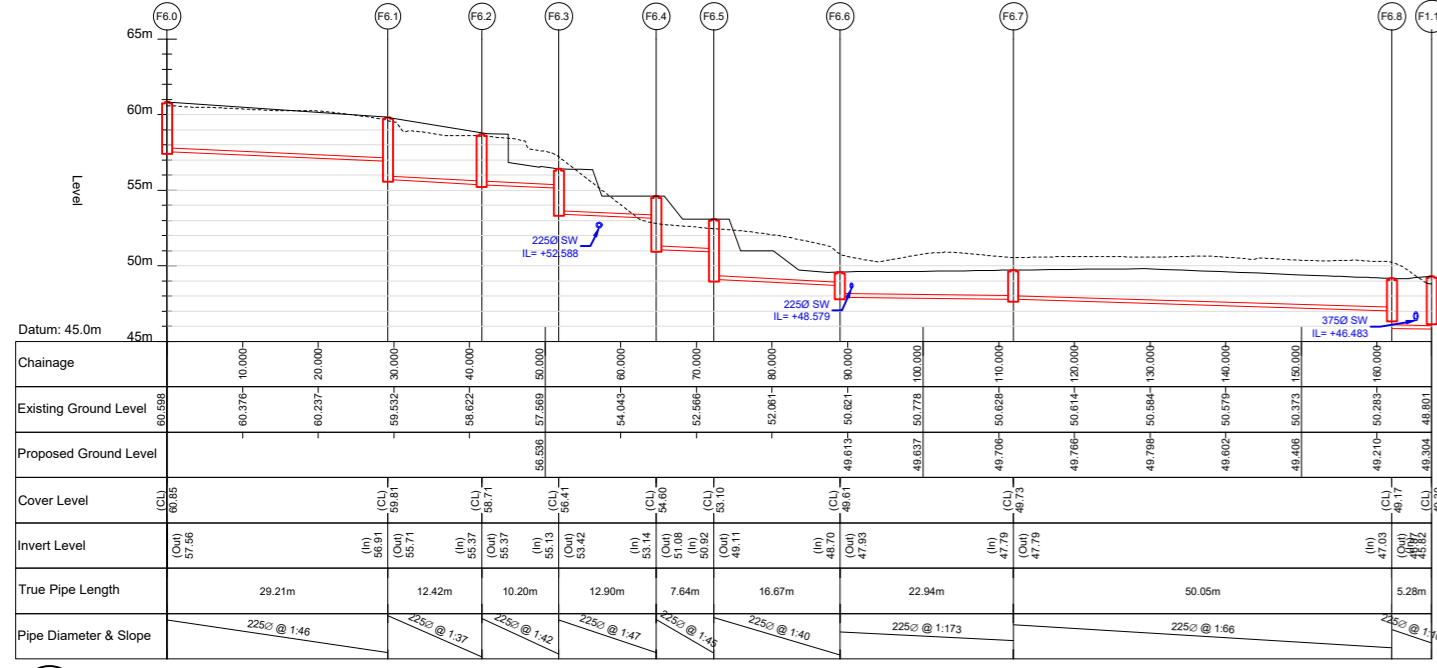
F3 SECTION
SCALE @ A0: H=1:500, V=1:250
SCALE @ A2: H=1:1000, V=1:500



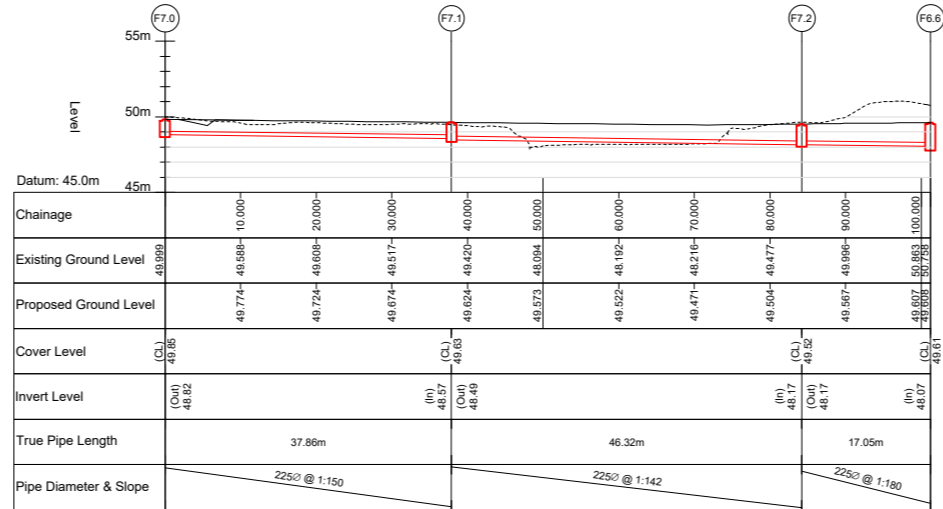
F4 SECTION
SCALE @ A0: H=1:500, V=1:250
SCALE @ A2: H=1:1000, V=1:500



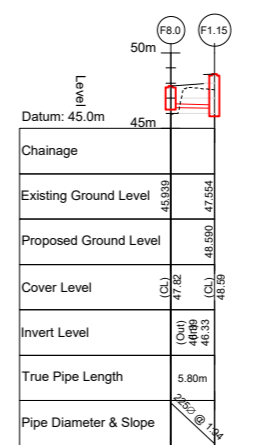
F5 SECTION
SCALE @ A0: H=1:500, V=1:250
SCALE @ A2: H=1:1000, V=1:500



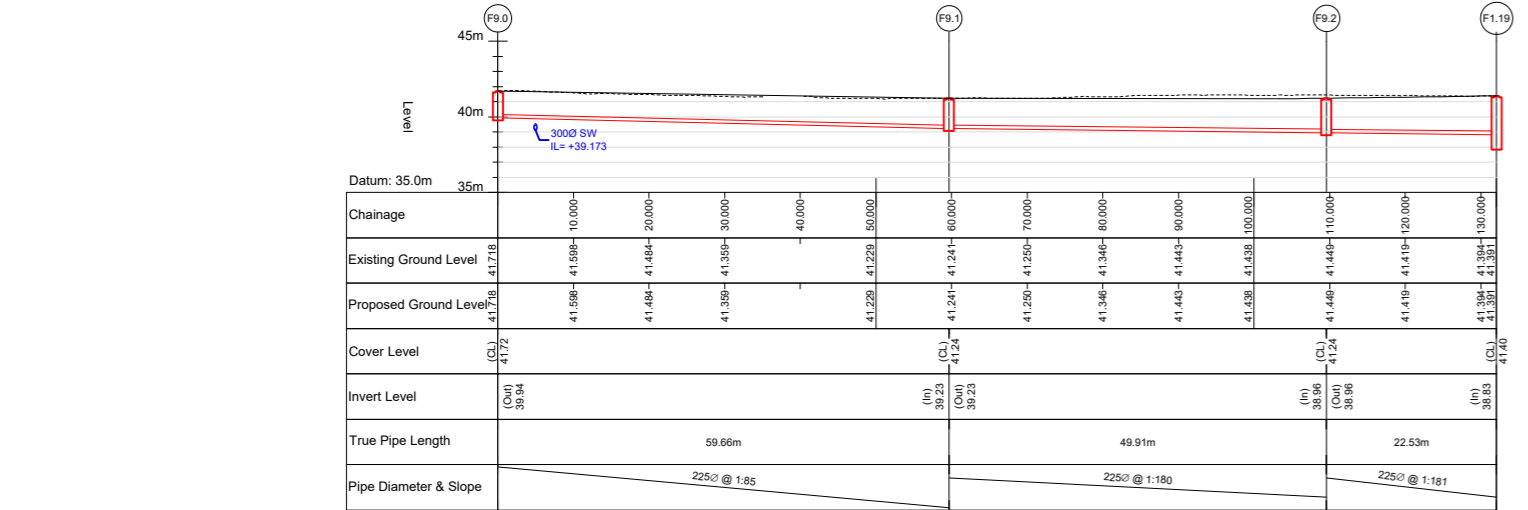
F6 SECTION
SCALE @ A0: H=1:500, V=1:250
SCALE @ A2: H=1:1000, V=1:500



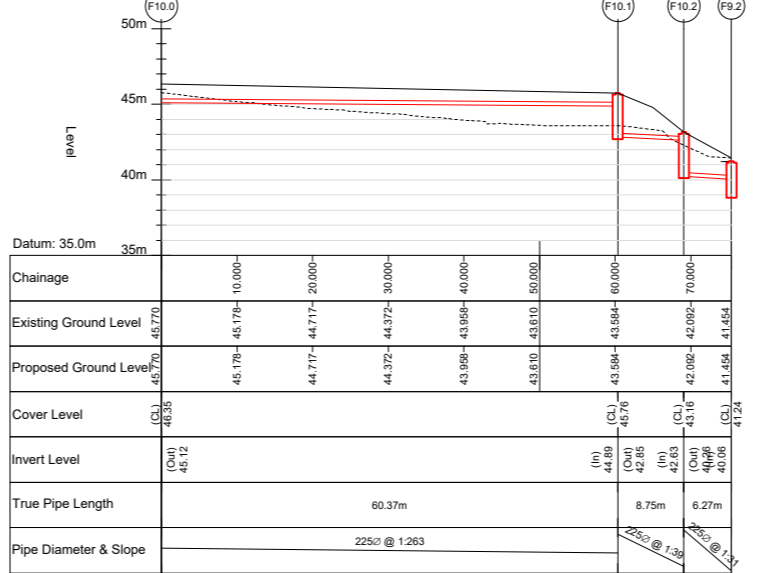
F7 SECTION
SCALE @ A0: H=1:500, V=1:250
SCALE @ A2: H=1:1000, V=1:500



F8 SECTION
SCALE @ A0: H=1:500, V=1:250
SCALE @ A2: H=1:1000, V=1:500



F9 SECTION
SCALE @ A0: H=1:500, V=1:250
SCALE @ A2: H=1:1000, V=1:500



F10 SECTION
SCALE @ A0: H=1:500, V=1:250
SCALE @ A2: H=1:1000, V=1:500

PL3	08.12.20	ISSUED FOR PLANNING	PL	REV
PL3	03.12.20	ISSUED FOR I.W. SODA	PL	REV
PL2	23.11.20	ISSUED FOR I.W. SODA	PL	REV
PL1	10.11.20	ISSUED FOR PLANNING	PL	REV
ISSUE	DATE	DESCRIPTION	PL	REV

DRAWING STAGE		PLANNING	
PROJECT TITLE		PROJECT NO.	
ST. KEVIN'S STRATEGIC HOUSING DEVELOPMENT		19305	
MODEL REFERENCE		MODEL REV	
19305-BMD-ZX-XX-CD-C-1000		P1 / 50	
DRAWING TITLE		DRAWING NO.	
FOUL DRAINAGE LONG SECTIONS		19305-BMD-ZX-XX-DR-C-1101	
DRAWING NO.		SHEET	
19305-BMD-ZX-XX-DR-C-1101		PL3	

BM Dublin Office: Sandwell House, 52-54 Lower Sandwell Street, Dublin 2, Ireland
 Tel: 001 673 2300 Fax: 001 673 1164
 London Office: 12 Mill Street, London SE1 3JY, United Kingdom
 Tel: (0044) 084 5413 2722
 Consulting Engineers, Civil, Structural, Project Management & cost intelligence | Web: www.bmc.ie

ACEI
 The Institution of Structural Engineers
 Consulting Engineers

CLIENT: **LAND DEVELOPMENT AGENCY**